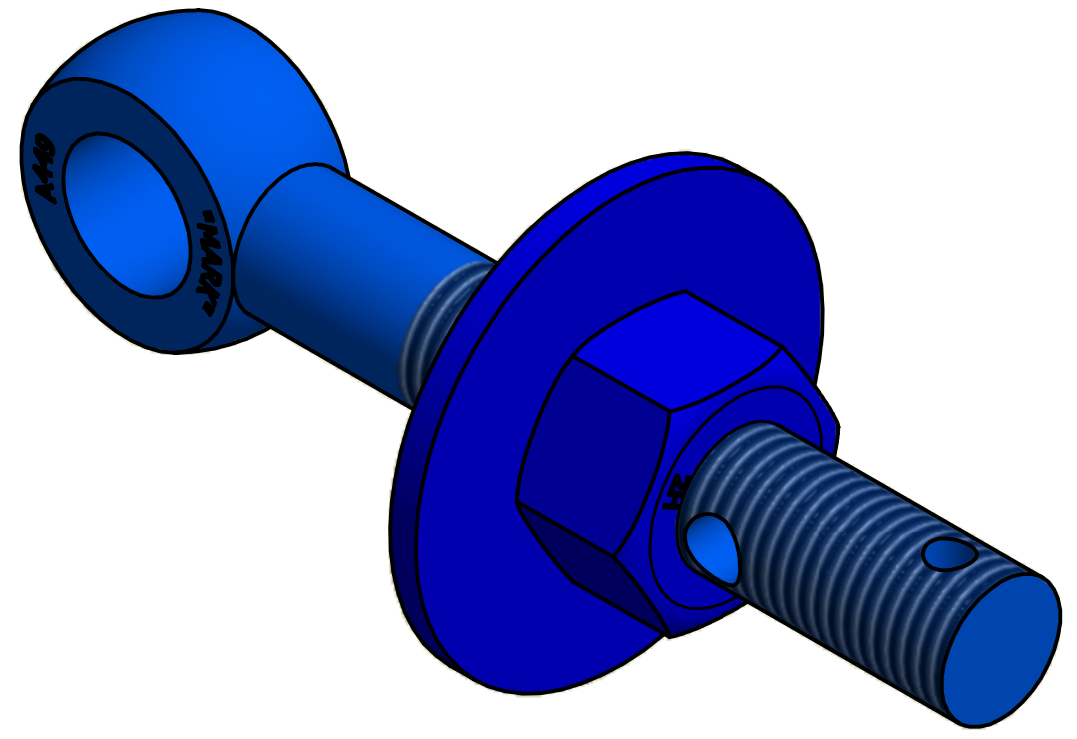
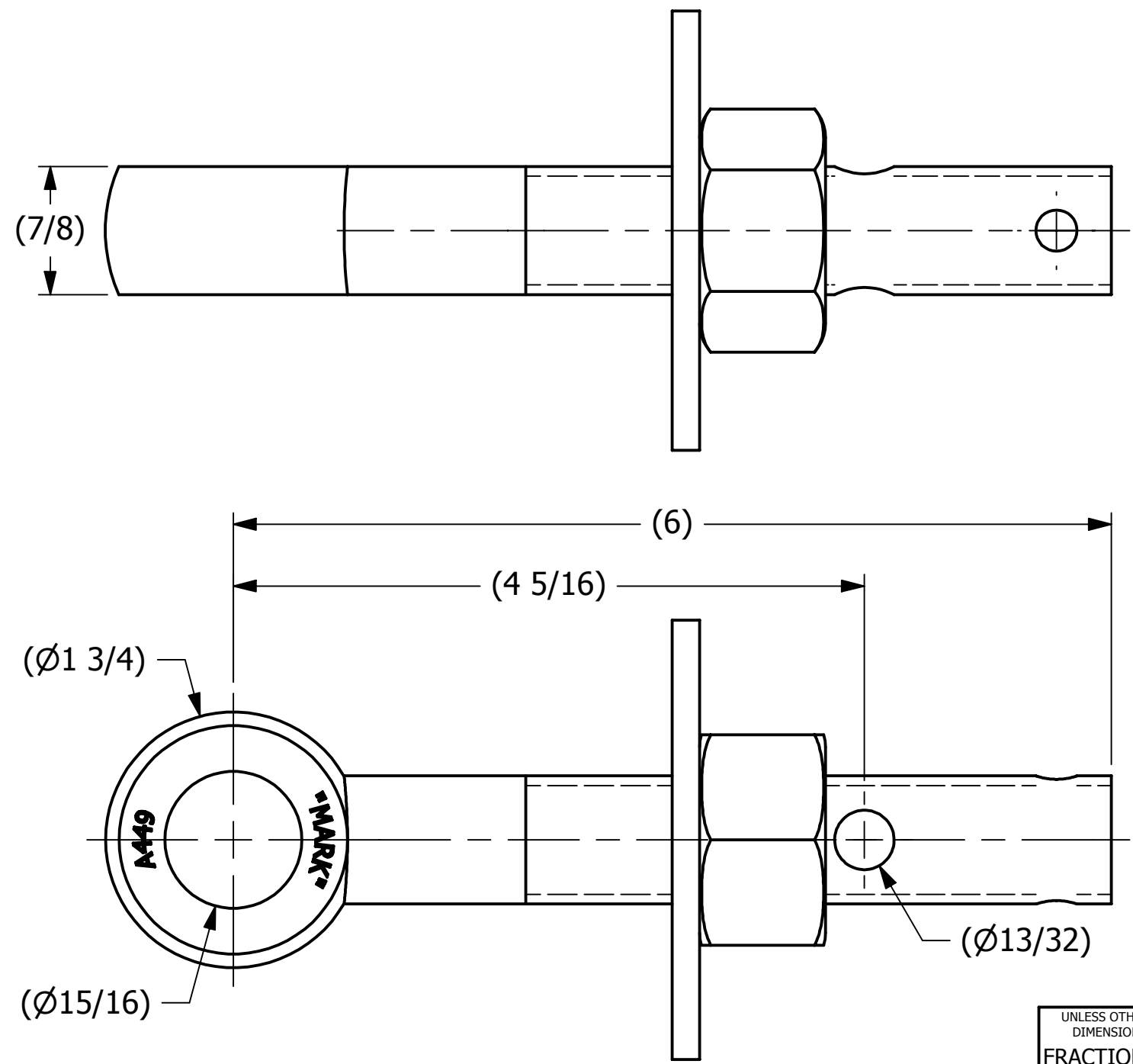


SALES DRAWING

SALES DRAWING



ISOMETRIC VIEW

REV	BY	DATE	DESCRIPTION
D	RJP	4-7-17	CHANGED 'TEFLON' TO 'PTFE'
C	JG	1-4-17	HHN78T WAS N78XT
B	RJP	11-16-15	UPDATED MARKING & TITLE BLOCK
A	CHL	2-11-08	NEW PART ADDED TO SYSTEM

<small>UNLESS OTHERWISE SPECIFIED DIMENSIONAL TOLERANCES</small> FRACTIONAL: $\pm 1/16$ X.XX: $\pm .03$ X.XXX: $\pm .015$ ANGULAR: $\pm 1^\circ$ <small>DEBURR ALL SHARP EDGES. ALL MACHINED SURFACES TO HAVE A 125 RMS FINISH UNLESS NOTED OTHERWISE.</small>	DRAWN BY:	CHL
	CHECKED BY:	WRB
	PROTOTYPE BY:	CHL
	PROTOTYPE DATE:	2/8/2008
	APPROVED FOR PRODUCTION BY:	WRB
THIRD ANGLE PROJECTION	PRODUCTION DATE:	2/11/2008

SALCO PRODUCTS, INC.		
PART NAME: EYEBOLT ASSEMBLY 7/8"X6"		
MATERIAL: CARBON STEEL, ASTM A449 TYPE 1/PTFE		
PROJECT #: WAG0515	SHEET #: 1 OF 1	SCALE: 1:1
DRAWING #: B24756	PART #: EB786XHAG5T	

THIS PRINT, PROPERTY OF SALCO PRODUCTS INC., CONTAINS PROPRIETARY INFORMATION AND MUST NOT BE COPIED, REPRODUCED, OR USED DETRIMENTALLY TO OUR INTEREST.